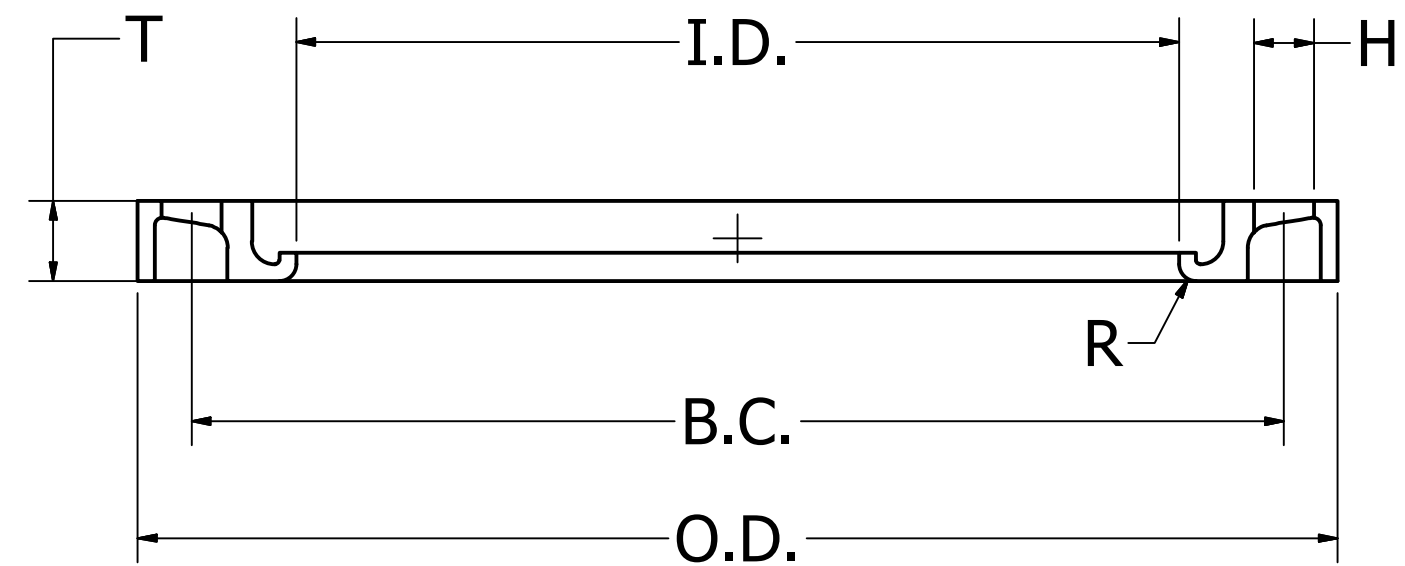
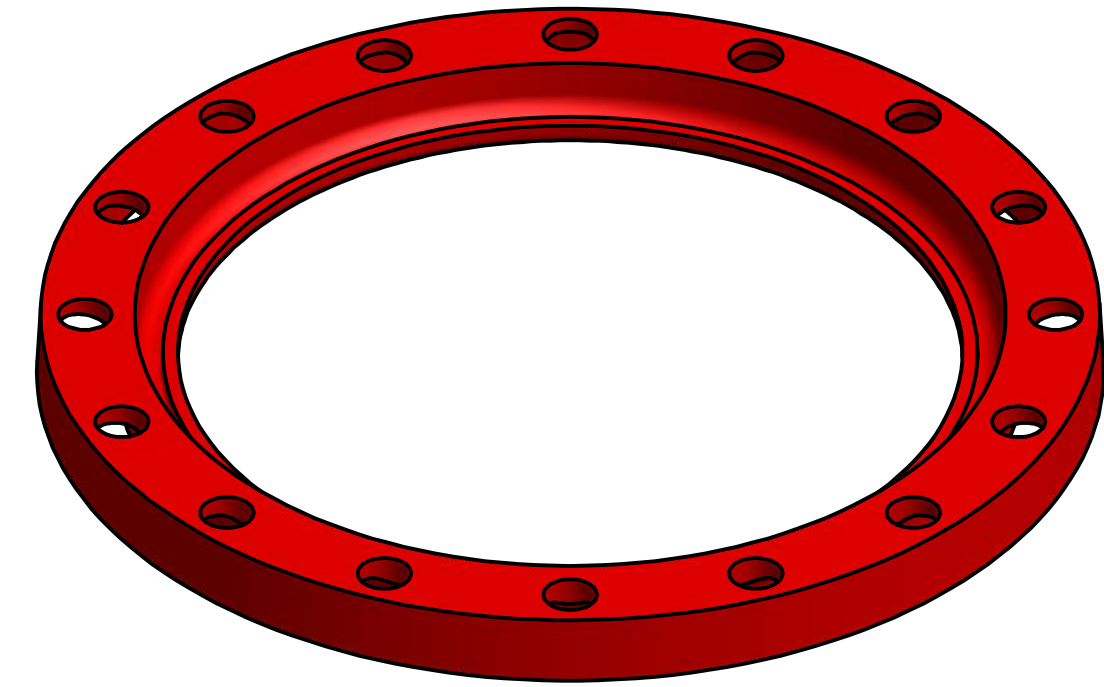


Material: Ductile Iron, ASTM A536, 65/45/12

REVISION HISTORY			
REV	DESCRIPTION	DATE	DESIGNER
2	ADD 42" SDR11	09/07/11	Matt Graff
3	ADD 20", 22", 24 SDR7	10/14/11	Matt Graff
4	EDIT SDR COUMN	06/28/12	Matt Graff
5	EDIT PER PHYSICAL FLANGE	05/20/13	Don Peterson
6	CHANGED SDR26 TO SDR17 AND SDR19 TO SDR26	2/26/2014	JEREMY GARZA
1	VALID - ORIGINAL DWG	7/29/11	Matt Graff
7	CHANGED 160psi to 200psi & 267psi to 335psi	4/2/14	JEREMY GARZA
8	UPDATE DIMENSIONS	7/11/2014	CRISTIAN SANCHEZ

Dimensions											
Pipe Diameter (in)	SDR	O.D.	T	L.D.	Bolt Count	Bolt Hold Size (H)	Bolt Hole Cirde (BC)	R	Weight (lbs)	Pressure Class (PC)	FM Approved
1/2"	7	3.500	0.500	0.900	4	0.625	2.380	0.130	1.0	335	N/A
3/4"	7	3.880	0.500	1.110	4	0.625	2.750	0.130	1.0	335	N/A
1"	7	4.250	0.560	1.380	4	0.625	3.130	0.130	1.0	335	N/A
1 1/4"	7	4.630	0.630	1.720	4	0.625	3.500	0.190	1.4	335	N/A
1 1/2"	7	5.000	0.690	1.970	4	0.625	3.880	0.250	1.7	335	N/A
2"	7	6.000	0.750	2.460	4	0.750	4.750	0.310	2.3	335	FM(200psi)
2"	11	6.000	0.500	2.630	4	0.750	4.750	0.200	1.5	200	FM(160psi)
2 1/2"	7	7.000	0.880	2.970	4	0.750	5.500	0.310	4.0	335	FM(200psi)
3"	7	7.500	0.940	3.600	4	0.750	6.000	0.400	4.2	335	FM(200psi)
3"	11	7.500	0.530	3.750	4	0.750	6.000	0.280	2.5	200	FM(160psi)
4"	7	9.000	0.940	4.600	8	0.750	7.500	0.400	5.0	335	FM(200psi)
4"	11	9.000	0.550	4.750	8	0.750	7.500	0.280	3.5	200	FM(160psi)
5"	7	10.000	0.940	5.690	8	0.875	8.500	0.440	6.0	335	FM(200psi)
6"	7	11.000	1.000	6.750	8	0.875	9.500	0.400	7.1	335	FM(200psi)
6"	11	11.000	0.630	6.880	8	0.875	9.500	0.280	4.5	200	FM(160psi)
8"	7	13.500	1.120	8.750	8	0.875	11.750	0.400	10.6	335	FM(200psi)
8"	11	13.500	0.850	8.880	8	0.875	11.750	0.280	8.0	200	FM(160psi)
10"	7	16.000	1.190	10.920	12	1.000	14.250	0.400	15.7	335	FM(200psi)
10"	11	16.000	0.980	11.000	12	1.000	14.250	0.310	12.0	200	FM(160psi)
12"	7	19.000	1.500	12.920	12	1.000	17.000	0.400	24.0	335	FM(200psi)
12"	11	19.000	1.250	13.130	12	1.000	17.000	0.280	20.0	200	FM(160psi)
14"	7	21.000	1.630	14.180	12	1.125	18.750	0.400	35.7	335	FM(200psi)
14"	11	21.000	1.380	14.380	12	1.125	18.750	0.310	30.0	200	FM(160psi)
16"	7	23.500	1.880	16.190	16	1.125	21.250	0.400	53.6	335	FM(200psi)
16"	11	23.500	1.650	16.380	16	1.125	21.250	0.350	40.0	200	FM(160psi)
18"	7	25.000	1.900	18.200	16	1.250	22.750	0.400	49.8	335	FM(200psi)
18"	11	25.000	1.670	18.380	16	1.250	22.750	0.350	41.0	200	FM(160psi)
20"	7	27.500	2.125	20.375	20	1.250	25.000	0.310	61.2	335	FM(200psi)
20"	11	27.500	1.810	20.380	20	1.250	25.000	0.400	53.0	200	FM(160psi)
22"	7	29.500	2.300	22.375	20	1.375	27.250	0.310	78.5	335	FM(200psi)
22"	11	29.500	2.000	22.380	20	1.380	27.500	0.370	65.0	200	FM(160psi)



NOTES

Improved Piping Products' backing ring and blinds mate with AWWA C207, ANSI B16.5 and ANSI B16.47, as appropriate. Specifications not stated in these standards follow internal specifications

DRAWN Matt Graff 7/29/2011 ENG Jeremy Garza 7/25/2014 QA Teresa Matias 7/25/2014 VPOP	
TITLE BUP-SDR DI Convuluted Flange / Backup Ring Submittal Sheet	
UNLESS OTHERWISE NOTED, ALL DIMENSIONS IN INCHES	SIZE PART NO C BUP-SDR submittal
SCALE	SALES NO REV 8 SHEET 1 OF 2

Ongoing engineering design efforts may affect the technical information listed in our publications.