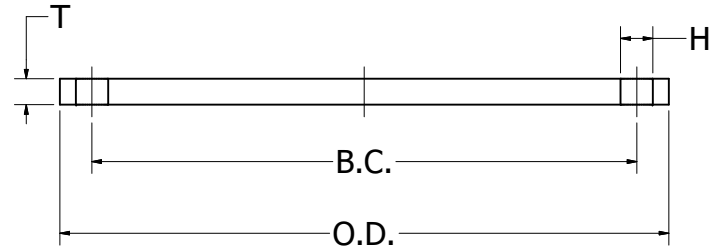
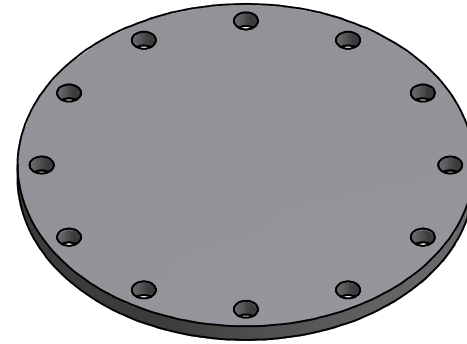


REVISION HISTORY			
REV	DESCRIPTION	DATE	DESIGNER
1	VALID	08/02/11	Matt Graff
2	CHANGED WEIGHT PER CORRECTIONS	5/20/2013	JEREMY GARZA

Dimensions							
Pipe Diameter (in)	O.D.	Bolt Hole Circle (BC)	Bolt Count	Bolt Hole Size (H)	T	Weight (lbs)	Operating Pressure (psi)
1.5"	5.000	3.880	4	0.625	0.630	3.5	267
2"	6.000	4.750	4	0.750	0.630	5.5	267
2.5"	7.000	5.500	4	0.750	0.630	7.5	267
3"	7.500	6.000	4	0.750	0.630	8.5	267
4"	9.000	7.500	8	0.750	0.630	12.0	267
5"	10.000	8.500	8	0.875	0.630	15.0	267
6"	11.000	9.500	8	0.875	0.690	18.0	267
8"	13.500	11.750	8	0.875	0.690	27.5	160
10"	16.000	14.250	12	1.000	0.690	38.5	110
12"	19.000	17.000	12	1.000	0.810	63.6	110
14"	21.000	18.750	12	1.125	0.940	89.0	128
16"	23.500	21.250	16	1.125	1.000	110.6	128
18"	25.000	22.750	16	1.125	1.060	145.4	110
20"	27.500	25.000	20	1.125	1.130	186.1	110
22"	29.500	27.250	20	1.375	1.190	225.6	100
24"	32.000	29.500	20	1.375	1.250	281.2	100
26"	34.250	31.750	24	1.375	1.310	334.3	89
28"	36.500	34.000	28	1.375	1.310	382.9	80
30"	38.750	36.000	28	1.375	1.380	445.0	80
32"	41.750	38.500	28	1.625	1.500	571.1	80
36"	46.000	42.750	32	1.625	1.630	753.1	80
40"	50.750	47.250	36	1.625	1.630	919.5	64
42"	53.000	49.500	36	1.625	1.750	1086.0	64
48"	59.500	56.000	44	1.625	1.750	1370.5	50
54"	66.250	62.750	44	1.875	2.130	2008.0	50
60"	73.000	69.250	52	1.875	2.250	2579.0	--



Material: A36 Plate Steel

Ongoing engineering design efforts may affect the technical information listed in our publications.

Notes			
Dimensions comply to AWWA C207-86, table 1			
Class 150 Bolt Circle. Mates with ANSI B16.5, B16.47, AWWA C207			
Finish: Red oxide primer or Hot dipped galvanized			
DRAWN	8/2/2011		TITLE
Matt Graff			Blind Plate Steel Submittal Sheet
ENG	5/21/2013		
Ellis Clark			
QA	5/30/2013		
Teresa Matias			
VPOP			
UNLESS OTHERWISE NOTED: STANDARD TOLERANCES BY NOMINAL SIZE 2" - 18" = ±0.063 20" - 36" = ±0.125 42" - 63" = ±0.250 AND ALL DIMENSIONS IN INCHES		SIZE/PART NO C BPEXXXXXXXXXX	SALES NO
		SCALE	MATL: A36
		WEIGHT N/A	SHEET 1 OF 1