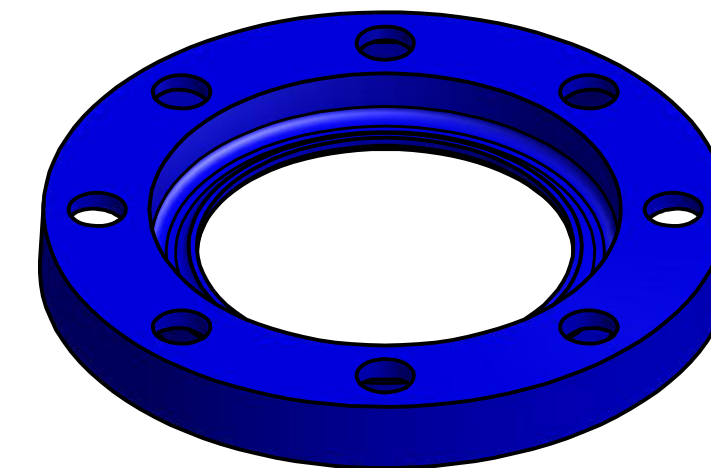
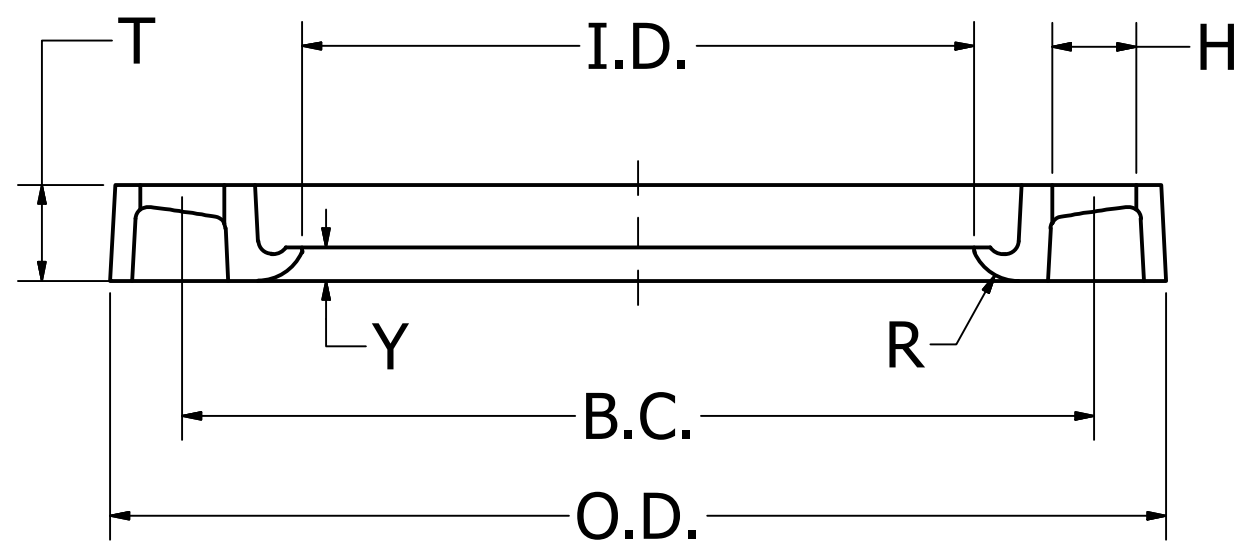


Material: Ductile Iron, ASTM A536, 65/45/12

REVISION HISTORY		
REV	DESCRIPTION	DATE
1	ORIGINAL	08/01/11

Dimensions											
Pipe Diameter (in)	O.D.	T	I.D.	Y	Bolt Count	Bolt Hole Size (H)	Bolt Hole Circle (BC)	R	Weight (lbs)	HDPE Operating Pressure	Steel Operating Pressure
4"	9.000	0.940	4.900	0.270	8	0.750	7.500	0.440	5.1	267	267
6"	11.000	1.000	7.000	0.280	8	0.880	9.500	0.500	7.0	267	267
8"	13.500	1.120	9.130	0.300	8	0.880	11.750	0.500	10.5	267	267
10"	16.000	1.190	11.250	0.600	12	1.000	14.250	0.500	15.3	267	267
12"	19.000	1.500	13.370	0.630	12	1.000	17.000	0.500	24.4	267	267
14"	21.000	1.630	15.480	0.700	12	1.130	18.750	0.500	36.1	200	267
16"	23.500	1.880	17.590	0.700	16	1.130	21.250	0.500	48.3	200	267
18"	25.000	1.750	19.700	0.880	16	1.250	22.750	0.500	47.9	200	267
20"	27.500	2.060	21.850	0.480	20	1.250	25.000	0.500	60.7	200	267
24"	32.000	2.130	26.050	0.600	20	1.380	29.500	0.500	90.4	200	267



Notes	
Class 150 Bolt Circle. Mates with ANSI B16.5, B16.1, AWWA C207	
Material: Tensile 65,000 psi; Yield 45,000 psi; 12% elongation	
Finish: Blue primer, Hot dipped galvanized or Epoxy coated	
DRAWN	8/1/2011
ENG	8/2/2011
QA	8/1/2011
VPOP	8/19/2011
TITLE	
DIPS-FM Backup Ring Submittal	
UNLESS OTHERWISE NOTED, ALL DIMENSIONS IN INCHES	SCALE
SIZE	PART NO
C	
SALES NO	
REV 1	SHEET 1 OF 1

Ongoing engineering design efforts may affect the technical information listed in our publications.