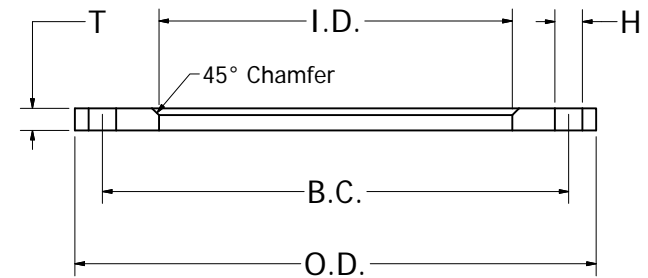
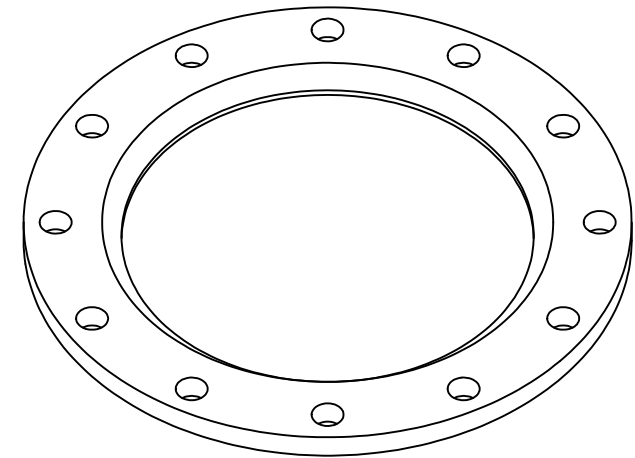


Material: A36 Plate Steel

REVISION HISTORY		
REV	DESCRIPTION	DATE
1	VALID	08/03/11
2	ADD CORRECTION ON DIMENSIONS	2/19/18

Dimensions								
Pipe Diameter (in)	O.D.	I.D.	Bolt Hole Circle (BC)	Bolt Count	Bolt Hole Size (H)	T	Weight (lbs)	Operating Pressure (psi)
1.5"	5.00	1.97	3.88	4	0.625	0.625	3	275
2"	6.00	2.44	4.75	4	0.750	0.625	4	275
2.5"	7.00	3.25	5.50	4	0.750	0.625	5	275
3"	7.50	3.57	6.00	4	0.750	0.625	5	275
4"	9.00	4.57	7.50	8	0.750	0.625	7	239
5"	10.00	5.66	8.50	8	0.875	0.625	8	247
6"	11.00	6.72	9.50	8	0.875	0.688	10	227
8"	13.50	8.72	11.75	8	0.875	0.688	14	117
10"	16.00	10.88	14.25	12	1.000	0.688	18	68
12"	19.00	12.88	17.00	12	1.000	0.812	31	60
14"	21.00	14.19	18.75	12	1.125	0.938	45	77
16"	23.50	16.19	21.25	16	1.125	1.000	58	63
18"	25.00	18.19	22.75	16	1.250	1.062	61	60
20"	27.50	20.19	25.00	20	1.250	1.125	76	56
22"	29.50	22.19	27.25	20	1.375	1.188	85	50
24"	32.00	24.19	29.50	20	1.375	1.250	106	49
26"	34.25	26.25	31.75	24	1.375	1.312	120	40
28"	36.50	28.25	34.00	28	1.375	1.312	134	38
30"	38.75	30.25	36.00	28	1.375	1.375	157	39
32"	41.75	32.25	38.50	28	1.625	1.500	203	41
34"	43.75	34.25	40.50	32	1.625	1.500	212	38
36"	46.00	36.25	42.75	32	1.625	1.625	254	39
40"	50.75	40.25	47.25	36	1.625	1.625	303	31
42"	53.00	42.25	49.50	36	1.625	1.750	229	33
48"	59.50	48.25	56.00	44	1.625	1.875	241	24
54"	66.25	54.25	62.75	44	1.875	2.125	253	27
60"	73.00	60.25	69.25	52	1.875	2.250	265	--



Notes
 Class 150 Bolt Circle. Mates with ANSI B16.5, B16.47, AWWA C207
 Finish: Red oxide primer or Hot dipped galvanized

PP IMPROVED
 PIPING PRODUCTS, INC.

TITLE
 PS-BUPP Chamfered Plate Steel for HDPE

UNLESS OTHERWISE NOTED,
 ALL DIMENSIONS IN INCHES

SIZE

Ongoing engineering design efforts may affect the technical information listed in our publications.