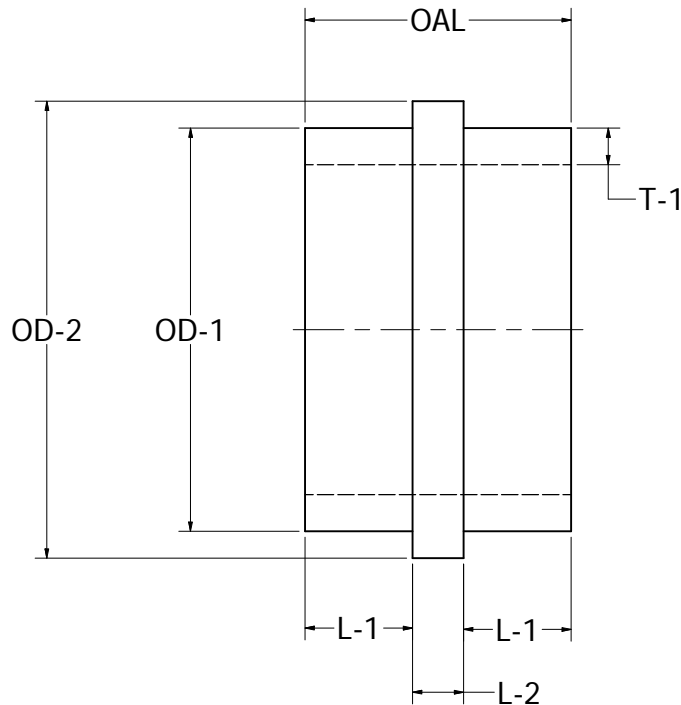


Material: PE 4710

REVISION HISTORY		
REV	DESCRIPTION	DATE
1	VALID - ORIGINAL DWG	06/03/11
2	ADD NSF NOTE	10/28/11

Dimensions						
Size	Type	OD-1	OD-2	OAL	L-1	L-2
18	IPS	18.000	21.100	19.500	8.000	3.500
20	IPS	20.000	23.500	19.500	8.000	3.500
22	IPS	22.000	25.600	19.500	8.000	3.500
24	IPS	24.000	27.900	19.500	8.000	3.500
26	IPS	26.000	29.750	19.800	8.000	3.800
28	IPS	28.000	32.000	19.800	8.000	3.800
30	IPS	30.000	34.000	19.800	8.000	3.800
32	IPS	32.000	36.125	19.800	8.000	3.800
34	IPS	34.000	38.125	20.000	8.000	4.000
36	IPS	36.000	40.500	20.000	8.000	4.000
42	IPS	42.000	47.125	24.000	10.000	4.000
48	IPS	48.000	53.500	24.000	10.000	4.000
54	IPS	54.000	59.625	37.000	16.500	4.000
63	IPS	63.000	66.790	37.000	16.500	4.000



Wall Thickness (T-1)			
Size	SDRs		
	11	17	26
18	1.636	1.059	0.692
20	1.818	1.176	0.769
22	2.000	1.294	0.846
24	2.182	1.412	0.923
26	2.364	1.529	1.000
28	2.545	1.647	1.077
30	2.727	1.765	1.154
32	2.909	1.882	1.231
34	3.091	2.000	1.308
36	3.273	2.118	1.385
42	3.818	2.471	1.615
48	4.364	2.824	1.846
54	4.909	3.176	2.077
63	5.727	3.706	2.423

Ongoing engineering design efforts may affect the technical information listed in our publications.

Notes		
Meets requirements of AWWA C906 Certified to NSF/ANSI 61		
DRAWN Matt Graff	6/3/2011	
ENG Ellis Clark	6/3/2011	
QA Adil Nasir	6/6/2011	
VPOP Duncan Schlicht	6/9/2011	
TITLE Wall Anchor Submittal - IPS		
UNLESS OTHERWISE NOTED, ALL DIMENSIONS IN INCHES		SIZE/PART NO C WA Submittal
SCALE		SALES NO
		REV 2 SHEET 1 OF 1