

**READY-TO-SHIP INVENTORY US & INTERNATIONAL
SAME DAY SHIP ON MOST ITEMS | 100,000 SQ FT WAREHOUSE**



WHY CHOOSE IPP?



STRONG CUSTOMER CONNECTION



SAME DAY SHIP ON MOST ITEMS



MOST CUSTOM ITEMS READY TO SHIP IN 3-4 WEEKS



EXPERIENCED REPS - CALL (800) 969-0962

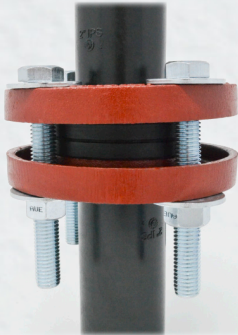


**FIND OUR FULL RANGE OF PRODUCTS, INCLUDING
DOWNLOADABLE SUBMITTAL PAGES AT IPP-INC.COM**

IPP PRODUCT LINES

WE ARE THE ORIGINATOR OF THE DELTAFLEX® CONVOLUTED BACKING RING. QUALITY YOU CAN COUNT ON.

DELTA FLEX BACKING RINGS



Ductile Iron Backing Rings

Styles: Primer Paint, Epoxy Coated, Hot Dip Galvanized (HDG)

Sizes:
1/2" - 63" IPS, 1" - 63" DIPS,
SDR 7 through 32.5
Metric: 63mm - 1600mm; True
Metric and Metric ID/ANSI bolt
pattern
Meets ASTM A536 GR. 65/45/12,
Factory Mutual



Polypropylene Encapsulated (PPDI) Backing Rings

PPDI Backing Rings are another IPP Exclusive product. Tough, chemical resistant convoluted rings for use when performance is on the line.

Glass reinforced polypropylene with A536 ductile iron insert.

Sizes:
2" - 36", SDR 7 and 13.5 ANSI,
42" SDR 11
Metric: 63mm - 900mm SDR7;
Metric ID/ANSI bolt pattern



Stainless Steel Backing Rings

All stainless steel backing rings are all made from 316 stainless steel and tested with a Niton Analyzer prior to shipment.

Sizes:
1" - 63" IPS, 1" - 63" DIPS
Metric: 63mm - 1600mm
SDR7, 11 and 13.5 - True Metric
dimensions and Metric ID/ANSI
bolt pattern
Meets ASTM A351-CF8M (316)

BACKING RINGS



Plate Steel Rings (IPS)

Material ASTM A36 plate steel with a 45 degree Chamfer/Radius; AIS compliant

Sizes:
1" - 63" IPS, 1" - 63" DIPS
Metric: 63mm - 1600mm, Metric
ID/ANSI bolt pattern
Metric pressure ratings and bolt patterns are expressed in "PN". Various PN's available and are dependent upon size.

**Call for more information on
Cast and Stainless Plate Steel,
Blinds and Lap Joint Flanges*

HDPE STRAIGHT LINE FITTINGS

ALL IPP FITTINGS MEET REQUIREMENTS OF ASTM D2513, ASTM D3261, AWWA C906, NSF 61 AND FACTORY MUTUAL WHERE APPLICABLE.



HDPE Flange & Beveled Adapters, Stub Ends

Flange Adapters: 2" - 63" IPS,
18" - 63" DIPS, 450mm - 1600mm
Beveled Adapters: 2" - 63" IPS,
18" - 63" DIPS

Stub Ends: 2" - 63" IPS, 18" - 63"
DIPS; 355mm - 630mm
Metric: True Metric dimensions
and Metric ID/ANSI bolt pattern



Reducers, Wall Anchors & MJ Adapters

Concentric Reducers:
18" - 63" IPS, 18" - 63" DIPS

Wall Anchors:
18" - 63" IPS, 18" - 63" DIPS

MJ Adapters:
18" - 54" DIPS (with or without
inserts), 18" - 54" IPS (with or
without inserts)

Metric: Available sizes upon request