

# IPP

## IMPROVED

PIPING PRODUCTS, INC.

**BUILDING A STRONG CUSTOMER CONNECTION**



### WHY CHOOSE IPP?

#### **I** INVENTORY

- Largest HDPE fittings inventory in the industry
- Over \$4 million in inventory ready to ship – 2" to 63"
- Over 100,000 sqft. warehouse ready to meet your needs

#### **P** PEOPLE

- Live customer service
- Quotes answered in 24 hours or less
- Experienced and enthusiastic sales team
- Personalized service
- We care about your success

#### **P** PRODUCTS

- Attention to details and quality
- Robust QC procedures
- Products designed and manufactured to meet major industry standards
- Picked as one of the top 10 best industrial pipe and fitting manufacturers by *Manufacturing Outlook Magazine*

## IPP PRODUCTS

### \*HDPE FLANGE ADAPTERS (IPS) – 2" to 63"



HDPE-PE4710/PE100 • CELL CLASS: PE445574C (ASTM D3350)

- Meets Requirements:  
AWWA C906 (4"-24")  
ASTM D2513 (2"-24"); ASTM D3261 (2"-24")
- Meets Dimensional Requirements:  
ASTM D3261 (28" & up); AWWA C906 (26" & up)
- Certification:  
FM 200/250 where applicable; NSF 61-G where applicable

### \*HDPE FLANGE ADAPTERS (DIPS) – 24" to 48"



HDPE-PE4710/PE100 • CELL CLASS: PE445574C (ASTM D3350)

- Meets Dimensional Requirements:  
ASTM D3261 (24" & up); AWWA C906 (24" & up)
- Certification:  
NSF 61-G where applicable

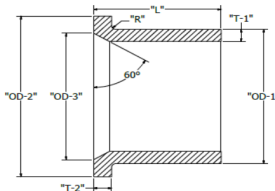
### \*HDPE MJ ADAPTERS (IPS/DIPS) – 24" to 54"



HDPE-PE4710/PE100 • CELL CLASS: PE445574C (ASTM D3350)

- Meets Dimensional Requirements:  
ASTM D3261 (24" & up); AWWA C906 (24" & up)
- Certification:  
NSF 61-G where applicable

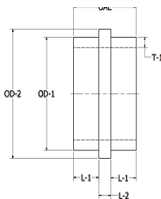
### \*BEVELED FLANGE ADAPTERS – 2" to 63"



HDPE-PE4710/PE100 • CELL CLASS: PE445574C (ASTM D3350)

- Meets Requirements:  
AWWA C906 (4"-24" SDR 11 only); ASTM D3261 (2"-24" SDR 11 only)
- Certification:  
NSF 61-G where applicable
- Custom bevels available in various SDR's 2"-63"

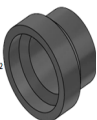
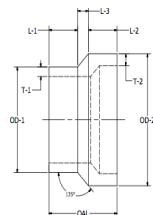
### \*WALL ANCHORS (IPS/DIPS) – 24" to 63"



HDPE-PE4710/PE100 • CELL CLASS: PE445574C (ASTM D3350)

- Meets Dimensional Requirements:  
AWWA C906 (24" & up)
- Certification:  
NSF 61-G where applicable

### \*CONCENTRIC REDUCERS (IPS/DIPS) – 24" to 54"



HDPE-PE4710/PE100 • CELL CLASS: PE445574C (ASTM D3350)

- Meets Dimensional Requirements:  
AWWA C906 (24" & up)
- Certification:  
NSF 61-G where applicable

**WWW.IPP-INC.COM • 800.969.0962 • SALES@IPP-INC.COM**

\* Product is marked/labeled to meet the applicable standards.

## DELTA FIT® PRODUCTS



**DELTA FIT**

**IPS 90s, 45s, Tees – 2" to 8"**

**HDPE-PE4710/PE100 • CELL CLASS: PE445574C (ASTM D3350)**

- Meets Requirements: ASTM D3261; AWWA C906
- Certification: NSF 61-G where applicable

## DELTA FLEX® PRODUCTS

### DUCTILE IRON DELTA FLEX BACKING RINGS – 1" to 63"



**Available in epoxy and galvanized**

- Material Designation:  
Ductile Iron ASTM A536, 65/45/12
- Meets Requirements:  
Class 150 ANSI B16.5; AWWA C207 Bolt Pattern
- Certification:  
FM 200/250 where applicable; NSF 61-G (non-wetted applications)

### STAINLESS STEEL DELTA FLEX BACKING RINGS – 1" to 63"



- Material Designation:  
Stainless Steel ASTM A351 CF8M (316) 70/30/30
- Meets Requirements:  
Class 150 ANSI B16.5; AWWA C207 Bolt Pattern
- Certification:  
FM 200/250 where applicable; NSF 61-G (non-wetted applications)

### CARBON STEEL BACKING RINGS – 1.5" to 63"



- Material Designation:  
A36 Plate Carbon Steel
- Meets Requirements:  
Class 150 ANSI B16.5; AWWA C207 Bolt Pattern

### PPDI DELTA FLEX BACKING RINGS – 2" to 36"



- Material Designation:  
Ductile Iron ASTM A536, 65/45/12 WITH Polypropylene Encapsulation
- Meets Requirements:  
Class 150 ANSI B16.5; AWWA C207 Bolt Pattern
- Certification:  
FM 200/250 where applicable to 30"; NSF 61-G (non-wetted applications)



**DID YOU KNOW . . .**  
**PPDI/PPDA IS A COST EFFECTIVE ALTERNATIVE**  
**TO STAINLESS STEEL**



- Offered in various SDRs 2" to 36"
- Provides an all non-metallic system
- Superior corrosion resistance
- Meets ANSI, ASTM, FM, and NSF (non-wetted) standards where applicable
- Not a coating like epoxy. 2-5mil of polypropylene won't chip off
- Ductile Iron core to provide strength and full pressure ratings based on SDR
- Offered with metric ID and ANSI bolt pattern
- Offered in all metric measurements (PPDA)

Improved Piping Products  
5010 Space Center Drive  
San Antonio, TX 78218  
800.969.0962  
sales@ipp-inc.com